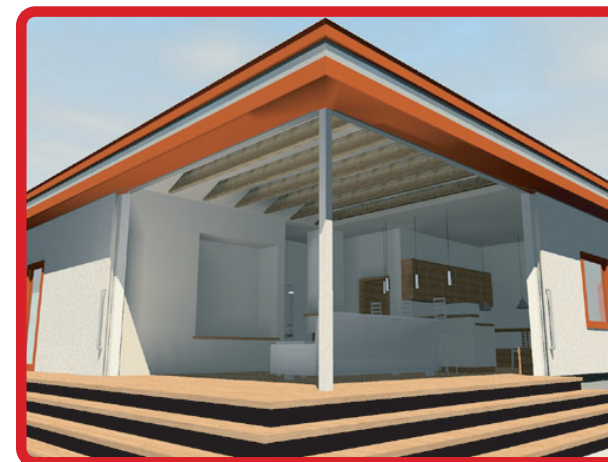


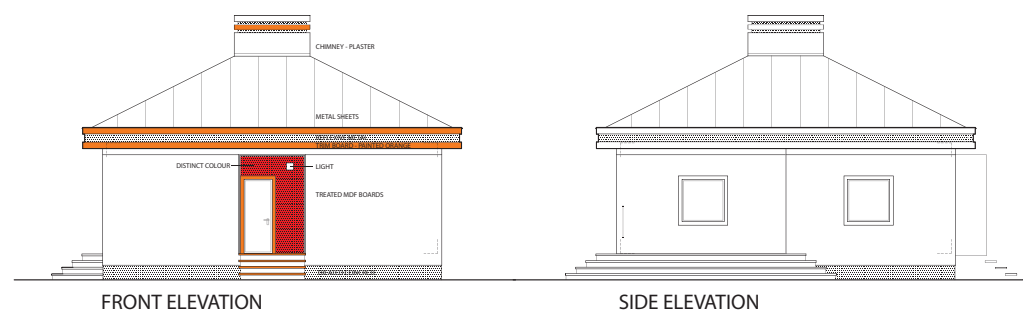
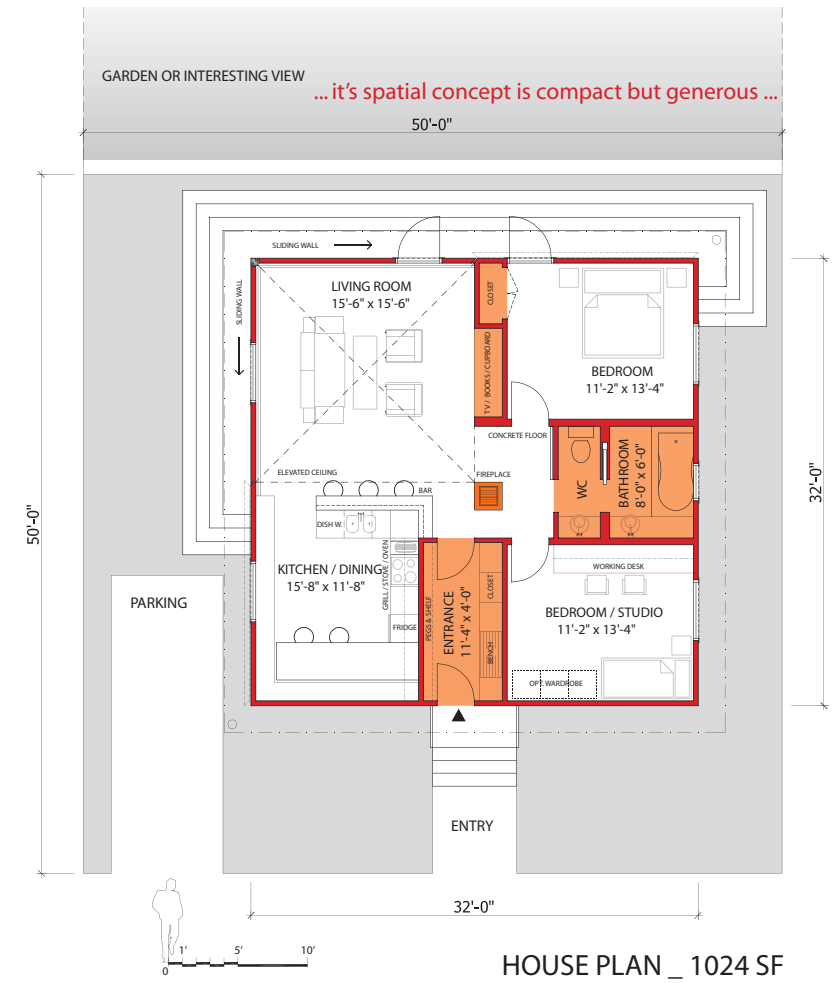
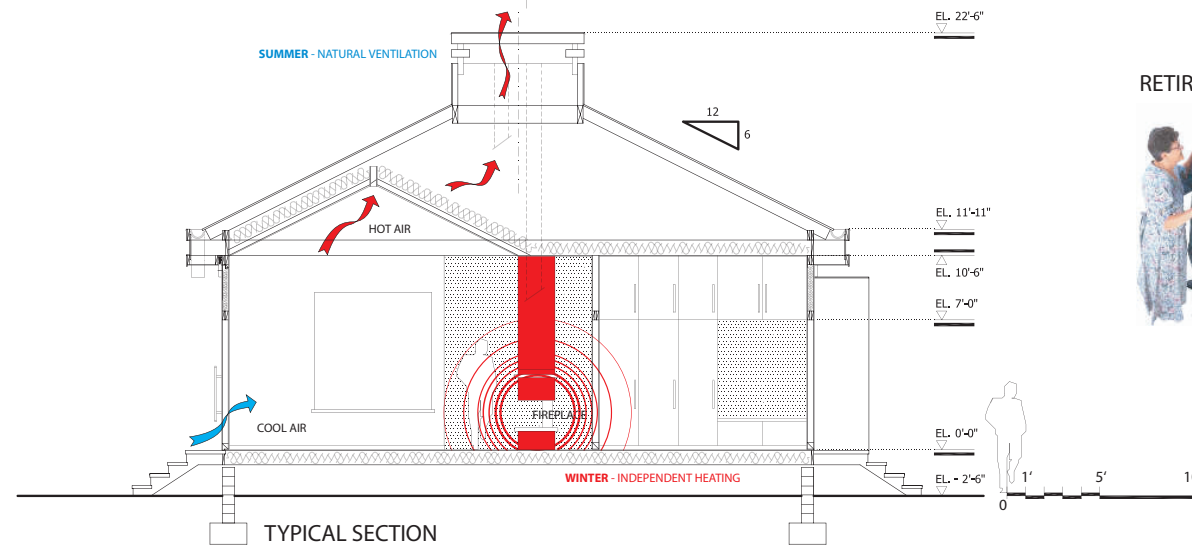
THE GLOBAL HOUSE 2005 _ REG.# 1526

NORTH AMERICA



MIDDLE CLASS IN AMERICAN SOCIETY HAS GROWN LAST DECADE. AT THE SAME TIME IT'S BEEN LOSING ITS LIVING STANDARD. URBAN SPRAWL AND SUBURBAN DEVELOPMENT BECAME A CHARACTERISTIC PICTURE OF NORTHERN AMERICA, HOWEVER HIGH ENERGY CONSUMPTION AND BIG SPACE REQUIREMENTS ARE DIFFICULT TO MAINTAIN FOREVER.

THIS HOUSE IS A RESPONSE FOR THESE ISSUES. IT'S SPACIAL CONCEPT IS COMPACT BUT GENEROUS; ALLOWS RESIDENTS TO ENJOY HIGH CEILING IN THE LIVING ROOM AND GIVES OPTICAL CONTACT WITH FIREPLACE FROM ALMOST EVERYWHERE IN THE HOUSE INCLUDING TUB. FIREPLACE IS LOCATED TO GIVE MAXIMUM ADDITIONAL HEATING EFFECT. LIFTED CEILING SERVES AS A "CHIMNEY" FOR NATURAL VENTILATION WHEN DOORS OR WINDOWS ARE OPENED IN SUMMER. THEREFORE NO AIRCONDITIONING IS NECESSARY. AS THE WALLS IN THE LIVING ROOM ARE SLIDING, IT IS POSSIBLE TO FULLY OPEN THE HOUSE, ALLOWING EXTERIOR FLOAT INSIDE AND INCREASE THE SPATIAL EXPERIENCE. WE PUT A STRESS ON A NEUTRAL OUTDOOR LOOK AS THE HOUSE WAS DESIGNED WITHOUT ANY PARTICULAR SITE. IT IS SUPPOSED TO FIT INTO OPEN LANDSCAPE AS WELL AS BECOME A PART OF ALREDY EXISTING SUBURB OF THE GLOBAL VILLAGE.



... we stress a neutral exterior look as the house was designed without any particular site.

ENERGY EFFICIENT LOW COST LIVING FOR 2/3 PERSONS

